

EN

## SKID PLATE INSTALLATION MANUAL

DE

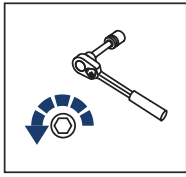
## MONTAGEEINLEITUNG FÜR UNTERBODENSCHUTZSYSTEM



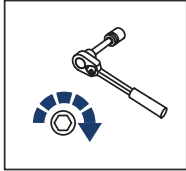
**For: Yamaha Grizzly 700 (2015-)**

2K.7158.1-5

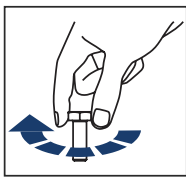




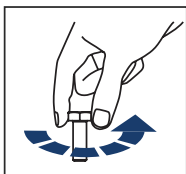
EN Regular fasteners  
DE Schraube herausdrehen



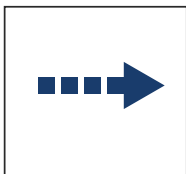
EN Regular fasteners  
DE Schraube eindrehen und festziehen



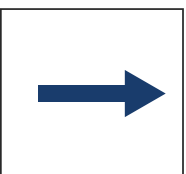
EN Screw a several turns  
DE Schraube wenige Umdrehungen eindrehen



EN Loosen bolts  
DE Schraube wenige Umdrehungen lösen



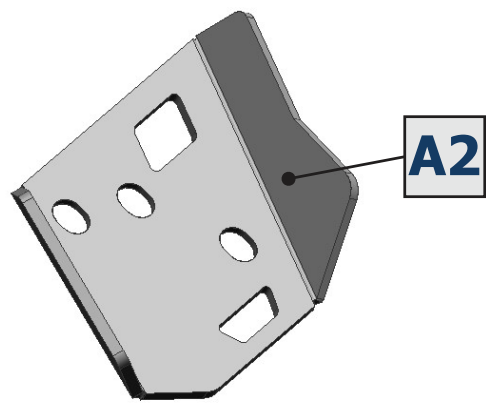
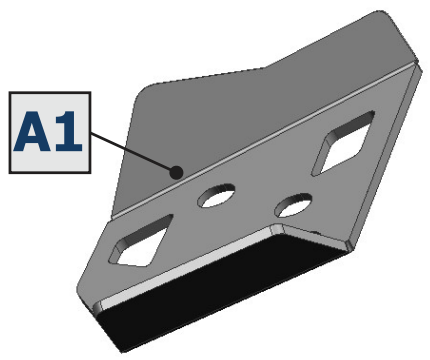
EN Movement Arrow  
DE Bewegungsrichtung

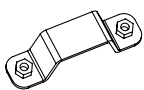
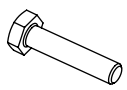
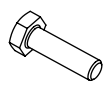
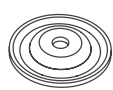

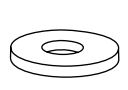


EN Location/Position Arrow  
DE Blickrichtung / Postionsrichtung

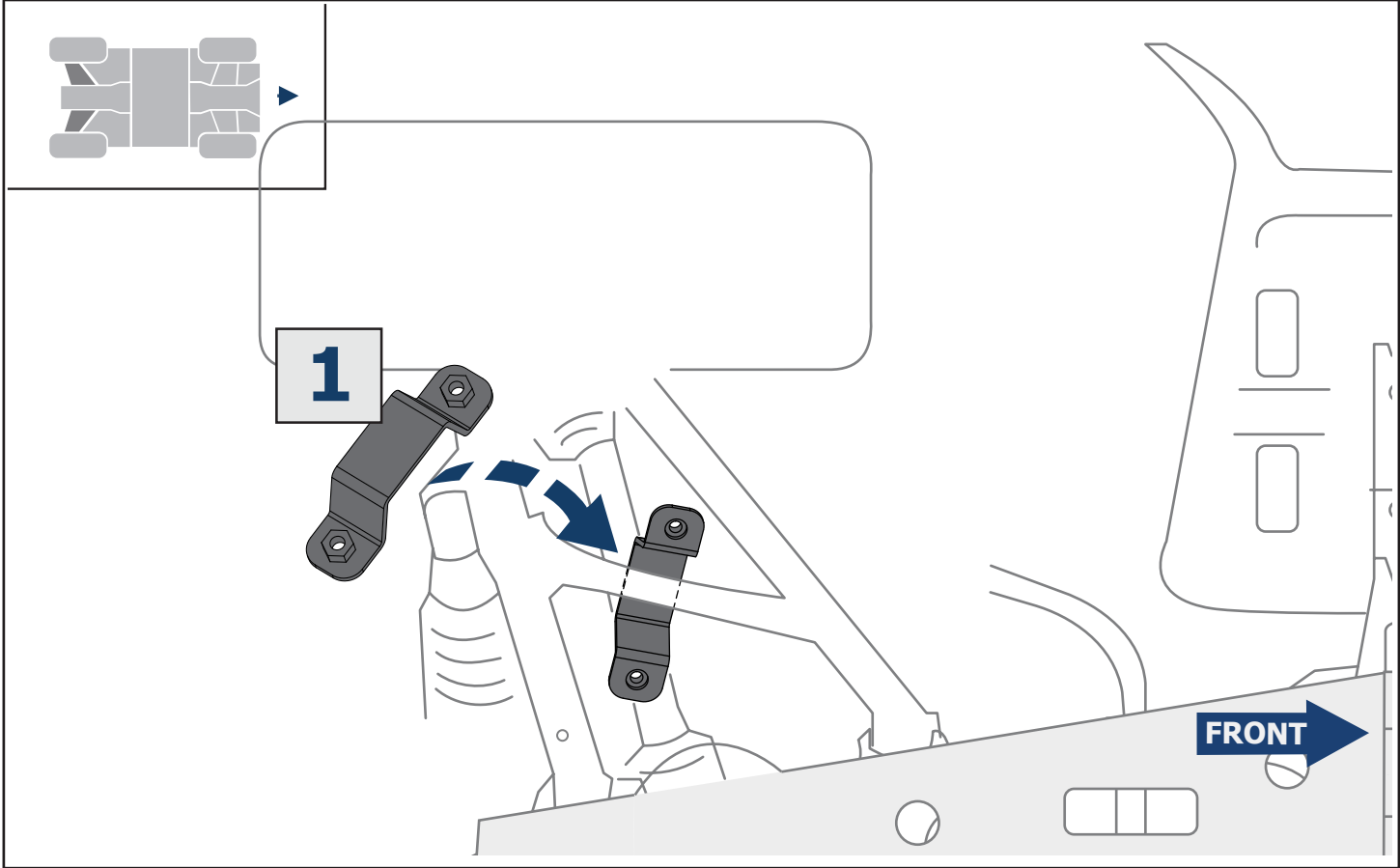
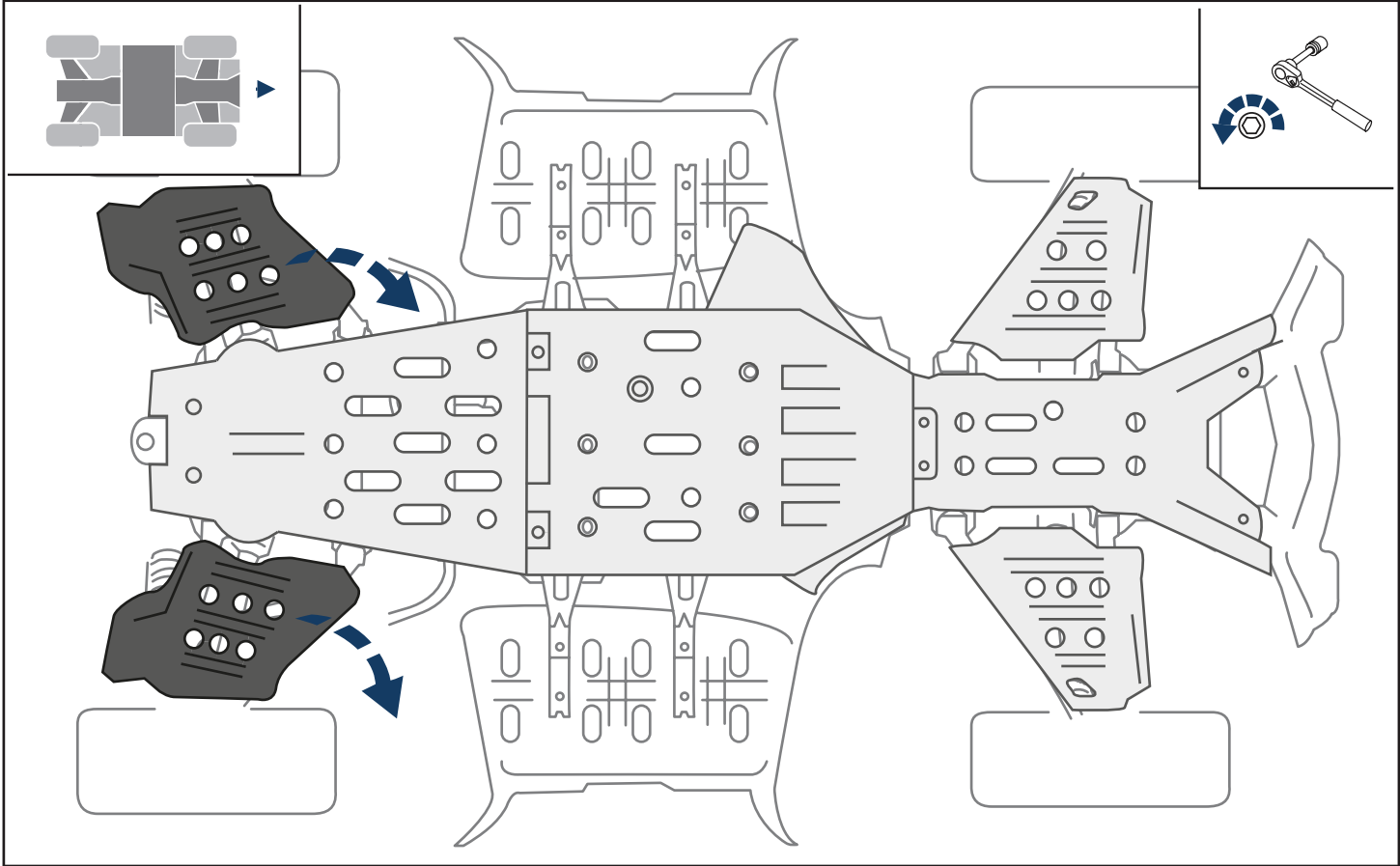


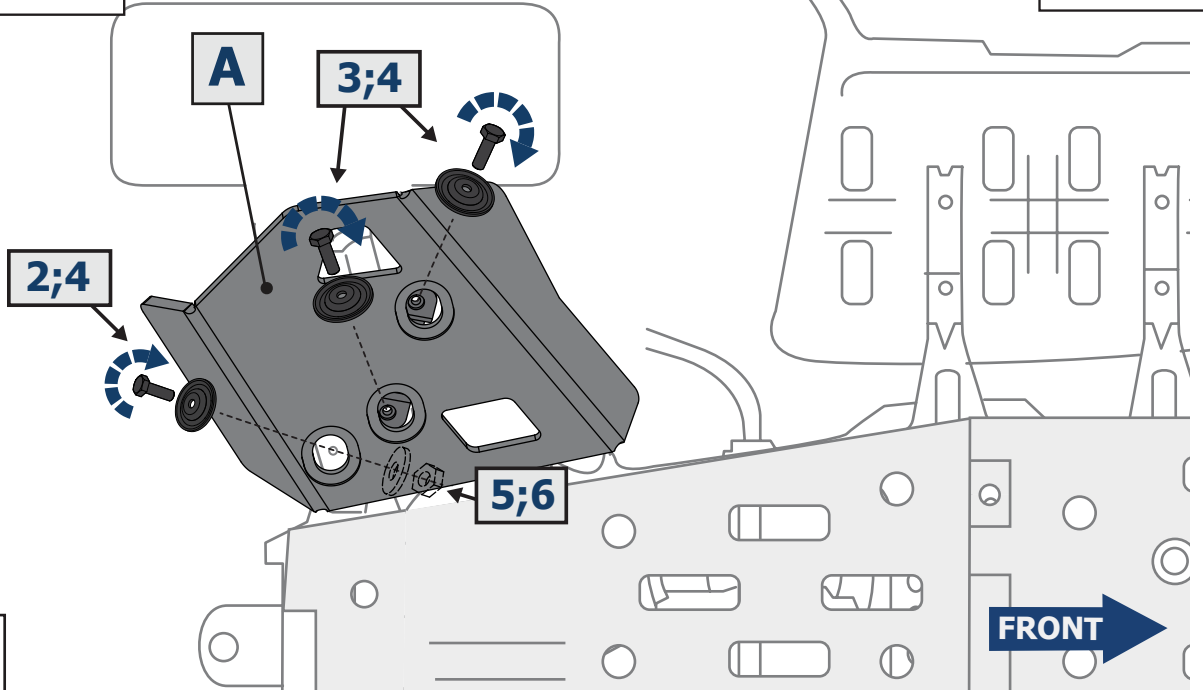
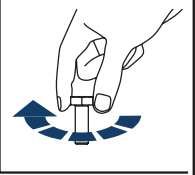
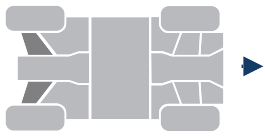
EN Screw Arrow  
DE Drehrichtung



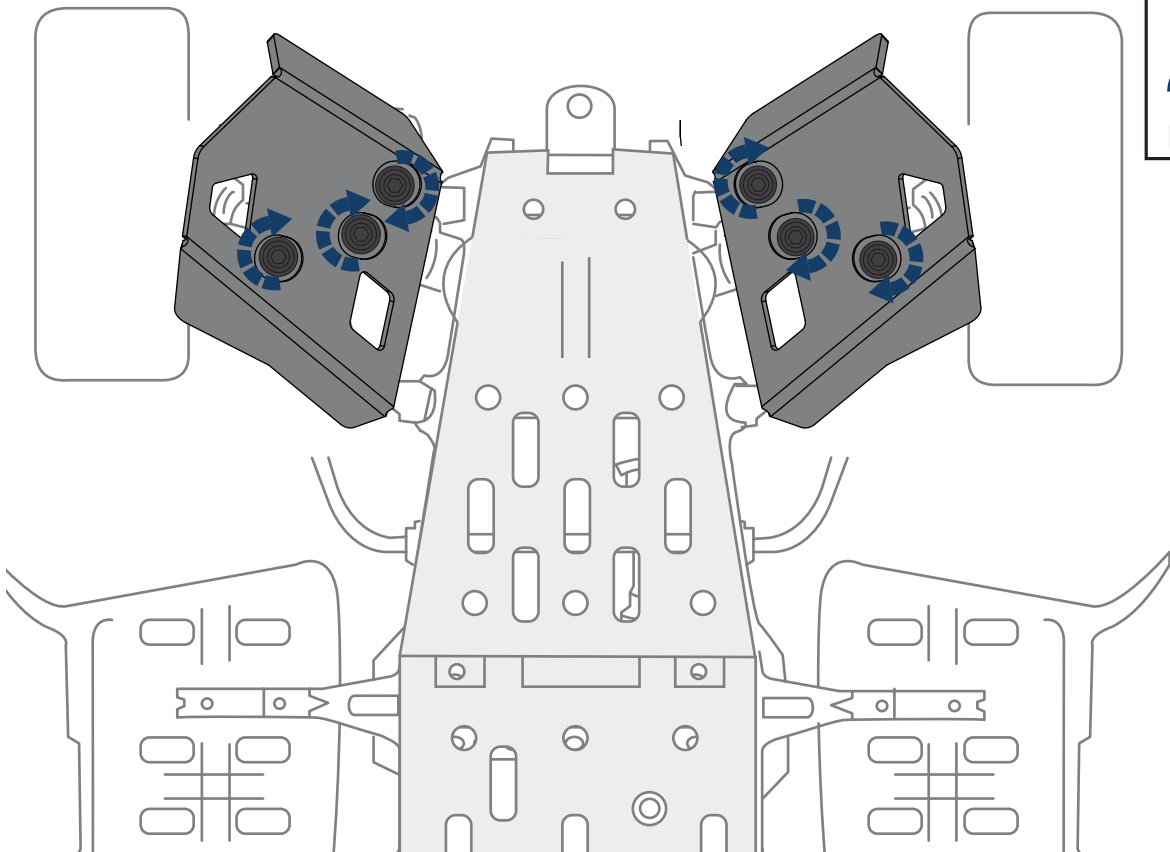
|   |  |  |   |   |   |
|---|--|--|---|---|---|
| <b>1</b><br><br>x2 | <b>2</b><br><br>M8x60<br>x2 | <b>3</b><br><br>M8x25<br>x4 | <b>4</b><br><br>Ø8<br>x6 | <b>5</b><br><br>M8<br>x2 | <b>6</b><br><br>Ø8<br>x2 |
|---|--|--|---|---|---|

**SCREW FORCE:**  
M6 - 10 Nm; M8 - 30 Nm





**A1=A2**



**M8=30 Nm**