

EN SKID PLATE INSTALLATION MANUAL

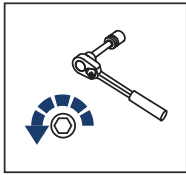
DE MONTAGEEINLEITUNG FÜR UNTERBODENSCHUTZSYSTEM



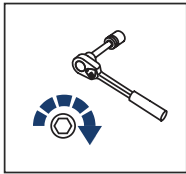
**For: Yamaha Grizzly 700 (2015-)**

2K.7158.1-4

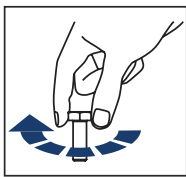




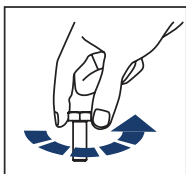
EN Regular fasteners  
DE Schraube herausdrehen



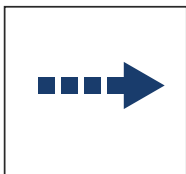
EN Regular fasteners  
DE Schraube eindrehen und festziehen



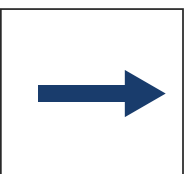
EN Screw a several turns  
DE Schraube wenige Umdrehungen eindrehen



EN Loosen bolts  
DE Schraube wenige Umdrehungen lösen



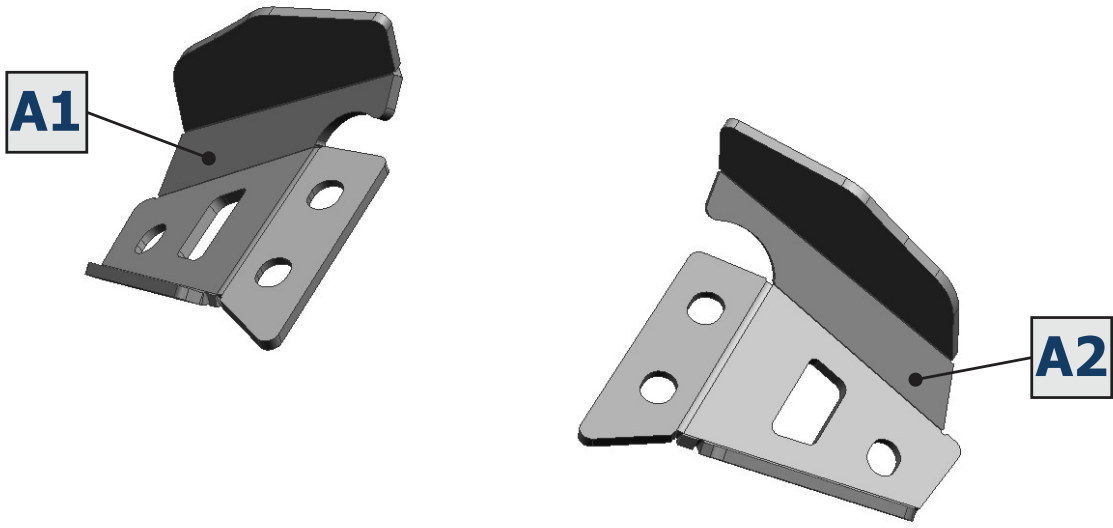
EN Movement Arrow  
DE Bewegungsrichtung

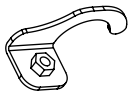
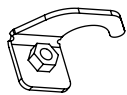
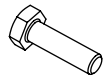
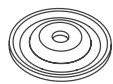


EN Location/Position Arrow  
DE Blickrichtung / Postionsrichtung



EN Screw Arrow  
DE Drehrichtung



<b>1</b>  x2	<b>2</b>  x4	<b>3</b>  M8x25 x6	<b>4</b>  Ø8 x6
---	---	---	--

**SCREW FORCE:**  
M6 - 10 Nm; M8 - 30 Nm

